

Santa Paula

Waterbody: 11th Street Drain (tributary to Santa Clara River)

Location: Upstream Santa Paula Airport
(34°20'54.99"N, 119° 3'19.82"W)

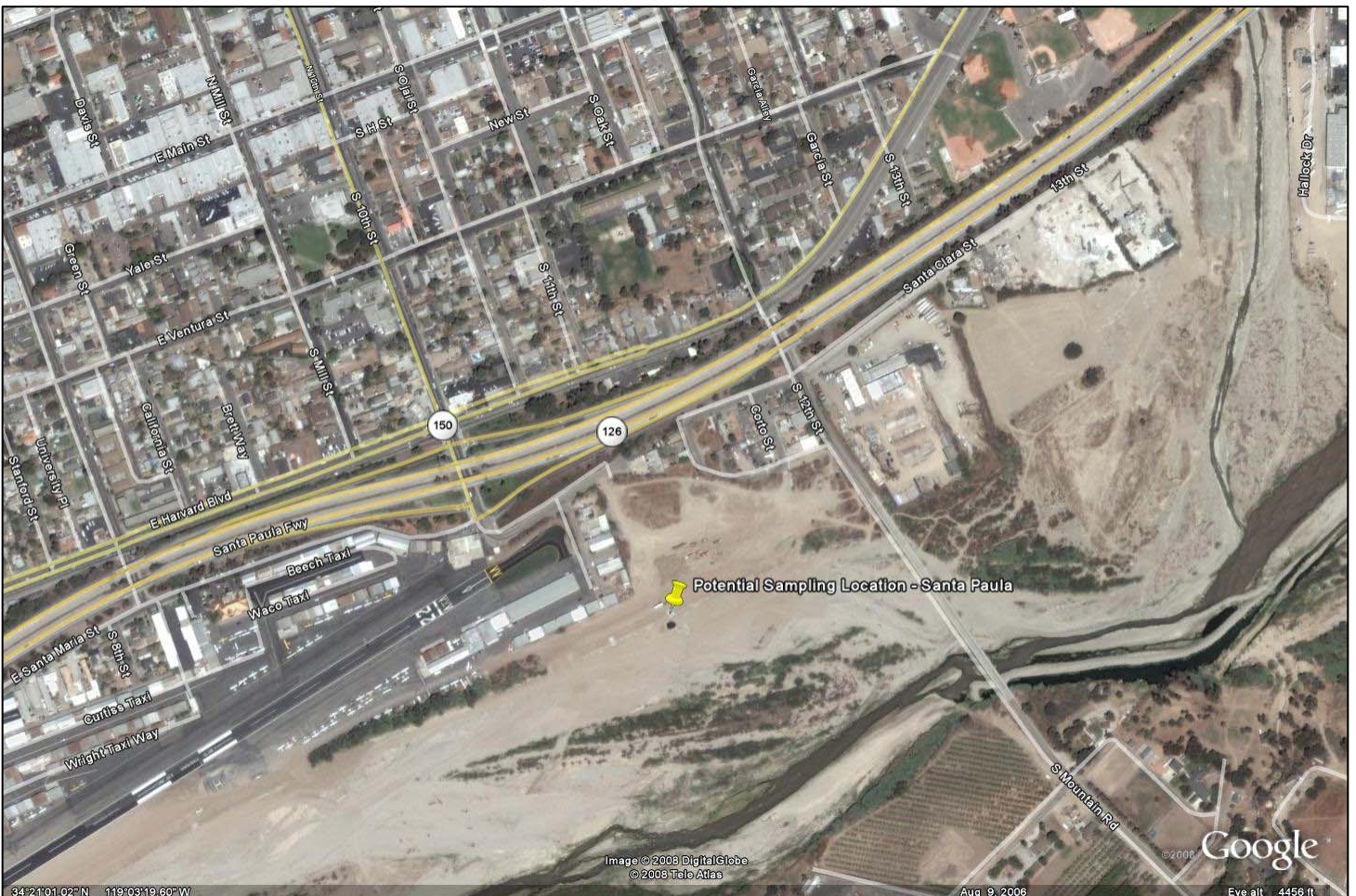
Pros: Excellent flat pad on top of outfall for sampling equipment

Cons: High potential for vandalism

Outstanding Site Selection Tasks: None

Other Potential Sites: None

Dry Season Flow Potential: Likely intermittent year-round flow due to urban runoff. No flow at time of initial observation





Entire City

Land Use	Acres	% of Total Watershed
Agriculture	210.3	7.0%
Cemeteries	19.4	0.7%
Com_Indus. Mix	4.6	0.2%
Commercial	235.4	7.8%
Extraction	30.5	1.0%
Facility	42.4	1.4%
Industrial_1	73.7	2.4%
Industrial_3	133.0	4.5%
No Info Given	33.5	1.1%
Recreation	4.7	0.2%
Res.1	266.9	8.9%
Res.2	86.8	2.9%
Res.3	1065.9	35.5%
Res.4	46.8	1.6%
Schools	91.7	3.1%
Transportation	166.4	5.5%
Under Construction	8.7	0.3%
Utilities	41.1	1.4%
Vacant Undifferentiated	440.6	14.7%
Totals	3002.4	100.0%

Selected Subwatershed

Land Use	Acres	% of Total Watershed
Commercial	9.4	14.7%
Industrial_1	2.5	4.0%
Res.2	2.8	4.3%
Res.3	30.5	47.7%
Schools	6.4	10.0%
Transportation	6.8	10.6%
Utilities	4.9	7.6%
Vacant Undifferentiated	0.8	1.2%
Totals	64.0	100.0%